

Descrizione / Description / Description

Miscelatore elettronico ad incasso per installazione a parete

Concealed wall - mounted electronic mixer

Mitigeur électronique encastrable pour installation mural

Materiali / Materials / Matériels

Componenti in finitura
Finishing components
Composants en finition

Acciaio Inox / Stainless steel / Acier inoxydable

Componenti torniti
Machined components
Composants tournés

Ottone / Brass / Laiton

Guarnizioni
Gaskets
Joints

EPDM

Componenti plastica
Plastic components
Composants en plastique

POM

Finitura superficiale
Surface finishing
Finition de la surface

Conforme / According / Conformément EN 248

In accordo alla EN 9227 in merito all'aggressione salina
According to EN 9227 regarding saline aggression
Conformément à la norme EN9227 concernant l'agression saline

Caratteristiche rubinetti con sensore IR
Features IR sensor taps
Caractéristiques des robinets avec capteur infrarouge

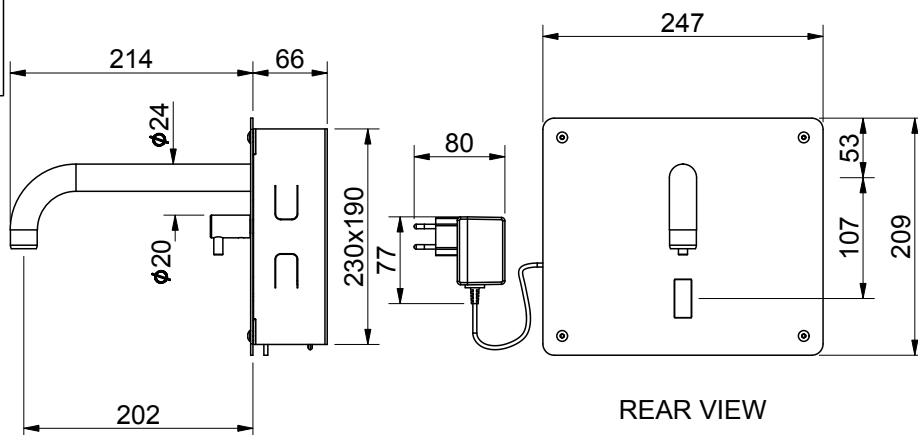
Distanza di esercizio Operating distance Distance de fonctionnement	0.5-20	Cm
---------------------------------------------------------------------------	--------	----

Tempo di apertura Opening time Temps d'ouverture	7,5	sec
--------------------------------------------------------	-----	-----


Sistema antivandalo Anti-vandal system Système anti-vandalisme	5	min
----------------------------------------------------------------------	---	-----


Sistema anti legionella Anti legionella system Système anti-légionelles	24	ore hours heures
-------------------------------------------------------------------------------	----	------------------------

Immagine / Picture / Image




Caratteristiche / Features

 5 - 70 °C

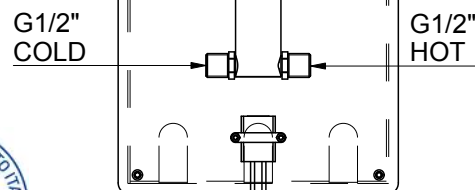
 230/6V DC

 12 l/min (3 bar)

 Min 0.5 - Max 6 (Recommended 2-4) bar



100% Made in Italy



Art. 0218006

Energy Expert by Idroexpert

Via dell'Industria 15 - 48015 Montaletto di Cervia (RA) Tel. 0544 964311 - Fax 0544 267811

info@divisionenergy.com - www.divisionenergy.com